

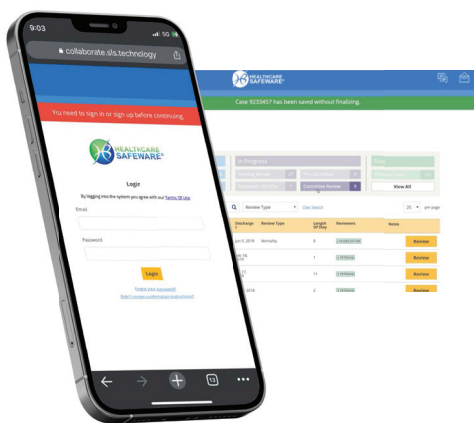
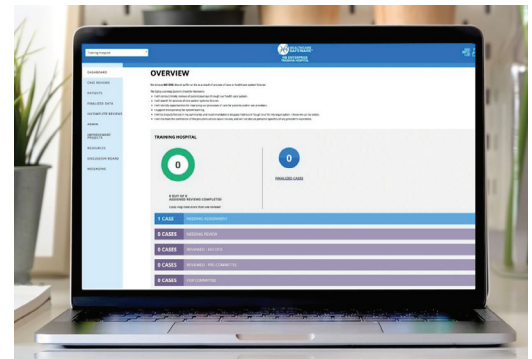
# HEALTHCARE SAFEWARE®

## Your All-in-one SaaS Tool for Actionable Insights

Healthcare Safeware® is a SaaS solution created to support the Continuous Organizational Improvement, Innovation and Learning (COI2L) lifecycle. It is designed to learn from frontline experiences by providing a place for the findings to be recorded, aggregated data, and creating visualizations of the data.

### Designed by Frontline Staff for Frontline Staff

Healthcare Safeware® is designed for frontline and quality staff to review cases with our standardized event taxonomy used by all SLS Collaborative members. This allows the hidden Opportunities for Improvement (OFIs) to be identified, recorded and reported with greater accuracy.

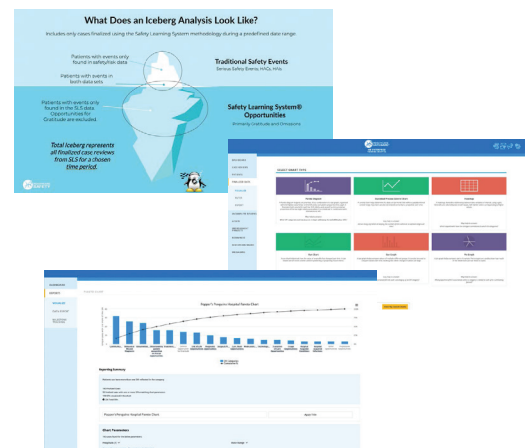


### Central Registry & Workflow Process Support

Healthcare Safeware® is a web-based central registry that can be easily accessed with an internet connection. The system is designed with a workflow process support that facilitates and manages our clinically validated process for case reviews: The Safety Learning System® (SLS).

### Inspire & Influence Leaders with Effective Reporting

In every organization utilizing Safeware®, data analysis reveals the Quality Department's blind spot - the omissions of care. More than 80% of the opportunities identified across the SLS Collaborative members are not reported in existing safety event reporting systems. Utilize Safeware® to report your health system's blind spots.



HEALTHCARE SAFEWARE

[hbhealthcaresafety.org](http://hbhealthcaresafety.org)

# ONLY THE BEST WHEN COMPARED TO THE REST

We strive to facilitate the High Reliability Organization (HRO) journey within established learning health systems, our SLS Collaborative. As a result, we are the ONLY systems improvement technology with an embedded organizational learning methodology and standardized frontline-derived event nomenclature.

|  | Healthcare Safeware® | RL Datix | Press Ganey HRP | Qualtrics | Midas |
|--|----------------------|----------|-----------------|-----------|-------|
| Embedded organizational learning methodology   | ✓                    |          | ✓               |           |       |
| Standardized frontline-derived healthcare event nomenclature                                     | ✓                    |          |                 |           |       |
| DoD Human Factors analysis   | ✓                    |          |                 |           |       |
| Embedded, flexible case review workflow  | ✓                    |          |                 |           |       |
| Custom data collection   | ✓                    | ✓        | ✓               | ✓         | ✓     |
| Survey creation & distribution   | ✓                    |          | ✓               | ✓         |       |
| Case reviews of any type (peer, mortality, diagnosis, safety events, suicides, readmission, etc) | ✓                    | ✓        |                 |           | ✓     |
| Voluntary reporting  | ✓                    | ✓        |                 |           | ✓     |
| RCA capability   | ✓                    | ✓        | ✓               |           | ✓     |
| FedRAMP Moderate ATO   | ✓                    |          |                 | ✓         |       |
| Embedded high reliability workflow   | ✓                    |          | ✓               |           |       |
| Lean-Six Sigma data visualization  | ✓                    |          |                 |           |       |
| Customizable forms/data capture  | ✓                    | ✓        |                 |           | ✓     |
| Workflow and UI designed by healthcare users   | ✓                    |          |                 |           |       |
| Integration with EMR   | ✓                    | ✓        | ✓               |           |       |
| Help/Support access to personal live help  | ✓                    | ✓        | ✓               | ✓         | ✓     |
| Charges for upgrades   |                      | ✓        | ✓               | ✓         | ✓     |
| Closing the loop for case follow-up and resolution   | ✓                    | ✓        | ✓               |           |       |

## BENEFITS

Enjoy a user-friendly interface designed with frontline staff in mind.

Enterprise integration across any number of regions and facilities.

Close the loop functionality for case follow-up and resolution.

Advanced PHI Security (FedRAMP Moderate ATO)

Study any cohort of interest as needed. The system will evolve and change priorities with you!

Track and manage quality improvement initiatives.

## TRUSTED BY HOSPITALS & HEALTH SYSTEMS\*



\*Listed user organizations are also participants in our SLS Research & Learning Collaborative. Visit [www.hbhealthcaresafety.org/sls-collaborative/](http://www.hbhealthcaresafety.org/sls-collaborative/) for more information.